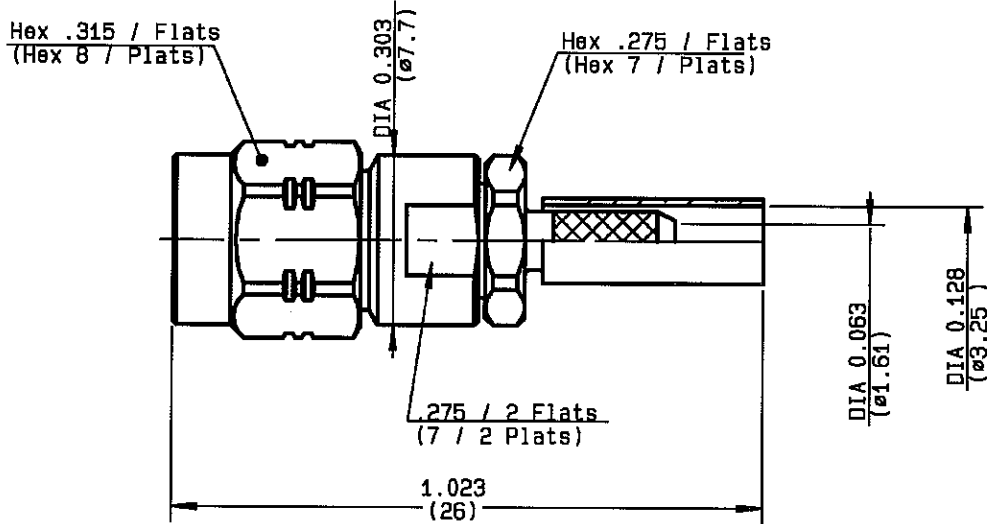


**STRAIGHT PLUG CRIMP TYPE  
CABLE 2.6/50 S**

**R124.073.120**  
**SERIES SMA-COM**



NOMINAL IMPEDANCE	50 $\Omega$	CABLES : KX 22A
FREQUENCY RANGE	0-12.4 GHz	RG 188
TEMPERATURE RATING	-65/+165 °C	RG 316
V.S.W.R	1.15 + .02 x F(GHz)Max1	
RF INSERTION LOSS	0.05 $\sqrt{F}$ (GHz) dB Max1	
VOLTAGE RATING	250 Veff Max1	
DIELECTRIC WITHSTANDING VOLTAGE	750 Veff Mini	
INSULATION RESISTANCE	5000 M $\Omega$ Mini	OTHERS CHARACTERISTICS
HERMETIC SEAL	NA Atm.cm <sup>3</sup> /s	CABLE RETENTION
LEAKAGE (pressurized only)	NA	90 N Mini
MECHANICAL DURABILITY	100 Cycles	CENTER CONTACT RETENTION
WEIGHT	4.8 gr	Axial force - mating end
SPECIFICATION		27 N Mini
		Axial force - opposite end
		27 N Mini
		Torque
		NA cm.N Mini
		RECOMMENDED TORQUES
		Mating
		60 cm.N
		Panel nut
		NA cm.N
		Clamp nut
		90 cm.N

CONNECTOR PARTS	MATERIALS	FINISH	(all values are given in micrometers)
BODY	BRASS	BBR 2	
OUTER CONTACT			
CENTER CONTACT	BRASS	GOLD 1.3 OVER COPPER 2.5	
INSULATOR	PTFE	-	
GASKET		-	
OTHERS PIECES	BRASS	BBR 2	

ISSUE  
**0708D**

CREATION DATE  
**30/06/1993**

FILE PART-NUMBER  
**EPC 97-03**



**RADIALL®**

GAUTIER

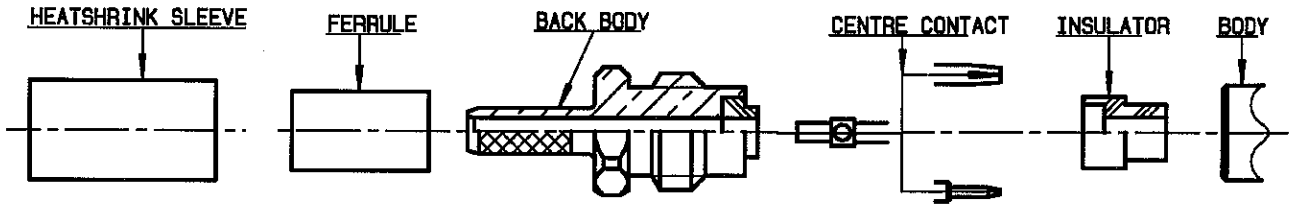
The information given here is subject to change without notice.  
Design changes may be in order to improve the product.

*Connect to the future*



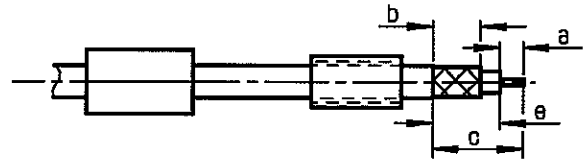
**R124.073.120**

ISSUE 0708D SERIES SMA-COM



①

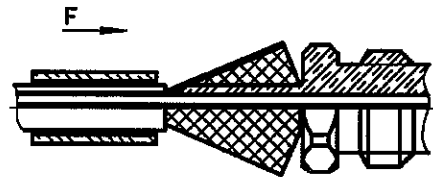
Slide heatshrink sleeve (R280.637.020-Option) and ferrule onto cable.  
Strip the cable .



Stripping	a	b	c	d	e
inch	0.138	0.276	0.531	0	0.394
mm	3.5	7	13.5		10

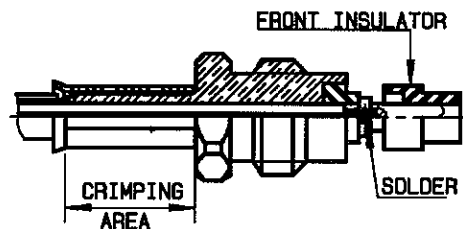
②

Fan the braid.  
Slide the back body between dielectric and braid.  
Slide ferrule over the braid (In direction F).



③

Crimp the ferrule with crimping tool R282.211.000 ( Hex. : .128 )(3.25) or crimping tool R282.293.000 ( M22520/5-01 ) + dies R282.235.003 ( M22520/5-03 )  
Cut excess of braid if necessary .  
Mount and solder the centre contact.  
Mount the front insulator.



④

Screw sub-assembly into the connector body.  
Recommended coupling torque: 90Ncm.  
Slide sleeve over ferrule and heatshrink in place (Option).

